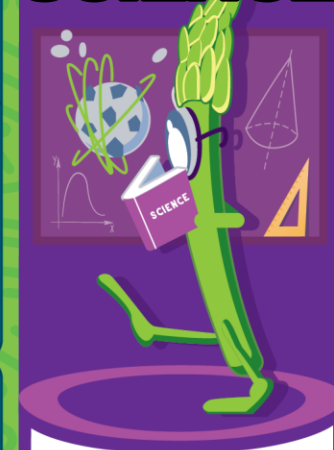


Cayuga ISD Breakfast Menu

MAY

MENU 2023

GEAR UP FOR SCIENCE



ANNOUNCEMENTS:

An assorted choice of cereal w/Whole Wheat Toast, ½ Cup 100 % Fruit Juice, ½ Cup Fruit (Assortment), and A Variety of 1% and Fat Free Milk will be served daily.

MONDAY

TUESDAY

WEDNESDAY

THURSDAY

FRIDAY

1ST
French Toast
or
Cereal w/ Whole Wheat Toast
½ Cup 100% Fruit Juice
½ Cup Fruit (Assortment)
Milk Variety

2ND
Breakfast Wrap
(Egg, Cheese and Sausage)
or
Cereal w/ Whole Wheat Toast
½ Cup 100% Fruit Juice
½ Cup Fruit (Assortment)
Milk Variety
(***Kolache will be served to
EOC Algebra I &
8th STAAR Grade Science)

3RD
Scrambled Eggs
Bacon
W/Whole Wheat Toast
or
Cereal w/ Whole Wheat Toast
½ Cup 100% Fruit Juice
½ Cup Fruit (Assortment)
Milk Variety

4TH
Sausage Biscuit
or
Cereal w/ Whole Wheat Toast
½ Cup 100% Fruit Juice
½ Cup Fruit (Assortment)
Milk Variety
(8th Grade STAAR Social Studies,
EOC Biology & US History)

5TH "School Lunch Hero Day"
Donuts or Donut Holes
or
Cereal w/ Whole Wheat Toast
½ Cup 100% Fruit Juice
½ Cup Fruit (Assortment)
Milk Variety
(Elementary Field Day)

8TH
Mini Pancakes
or
Cereal w/ Whole Wheat Toast
½ Cup 100% Fruit Juice
½ Cup Fruit (Assortment)
Milk Variety

9TH
Uncrustable (PB&J)
or
Cereal w/ Whole Wheat Toast
½ Cup 100% Fruit Juice
½ Cup Fruit (Assortment)
Milk Variety
(3rd -- 5th Grade STAAR Math)

10TH
Breakfast Combo Bar
W/Whole Wheat Toast
or
Cereal w/ Whole Wheat Toast
½ Cup 100% Fruit Juice
½ Cup Fruit (Assortment)
Milk Variety

11TH Cheese Toast (Pre-K)
or
*Cinnamon Roll
w/Turkey Sausage Links
or
Cereal w/ Whole Wheat Toast
½ Cup 100% Fruit Juice
½ Cup Fruit (Assortment)
Milk Variety

12TH
Chicken Biscuit
or
Cereal w/ Whole Wheat Toast
½ Cup 100% Fruit Juice
½ Cup Fruit (Assortment)
Milk Variety

15TH
Pancakes & Sausage on a Stick
or
Cereal w/ Whole Wheat Toast
½ Cup 100% Fruit Juice
½ Cup Fruit (Assortment)
Milk Variety

16TH
Egg Bake Bites
(Turkey Sausage, Cheddar Cheese)
W/Whole Wheat Toast
or
Cereal w/ Whole Wheat Toast
½ Cup 100% Fruit Juice
½ Cup Fruit (Assortment)
Milk Variety

17TH
Dutch Waffle
Bacon
or
Cereal w/ Whole Wheat Toast
½ Cup 100% Fruit Juice
½ Cup Fruit (Assortment)
Milk Variety

18TH
Sausage Biscuit
or
Cereal w/ Whole Wheat Toast
½ Cup 100% Fruit Juice
½ Cup Fruit (Assortment)
Milk Variety

19TH
Skillet Frittata
(Egg, Cheese, & Turkey Sausage)
w/Whole Wheat Toast
or
Cereal w/ Whole Wheat Toast
½ Cup 100% Fruit Juice
½ Cup Fruit (Assortment)
Milk Variety

22ND
Pig-n-a-Blanket (Kolache)
or
Cereal w/ Whole Wheat Toast
½ Cup 100% Fruit Juice
½ Cup Fruit (Assortment)
Milk Variety

23RD
Cereal w/ Whole Wheat
Toast
½ Cup 100% Fruit Juice
½ Cup Fruit (Assortment)
Milk Variety

24TH
Cereal w/ Whole Wheat
Toast
½ Cup 100% Fruit Juice
½ Cup Fruit (Assortment)
Milk Variety

25TH
Teacher/Staff Work Day
***Breakfast will be provided in
the Cafeteria starting @ 7:45
Faculty / Staff Meeting in
Cafeteria @ 8:00

26TH

29TH

30TH

31ST



Food and Nutrition Division
National School Lunch Program



TEXAS DEPARTMENT OF AGRICULTURE
COMMISSIONER SID MILLER

This product was funded by USDA.
This institution is an equal opportunity provider.



Updated 5/1/2023
www.SquareMeals.org